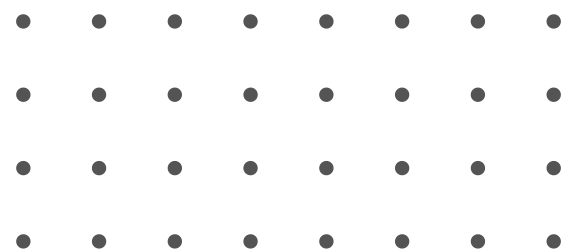




# SMART ERP FOR KITCHENWARE RETAIL IN SHARJAH

—Solution by Zolute—





# ABOUT US

Zolute specializes in IT consulting and software development, committed to delivering efficient and innovative solutions that seamlessly integrate the latest technologies into your existing operations. With a global presence spanning the USA, UK, and UAE, we strive to enhance your business processes, driving growth and excellence through our dedicated expertise and professional approach.





# Zolute & Odoo

Zolute has established a strategic partnership with Odoo in the Middle East region to deliver tailored solutions built upon Odoo's advanced technology. Acting as consultants, Zolute manages clients' IT infrastructure, enabling them to concentrate more effectively on their core business objectives.



# odoo



# ZOLUTE

= IT INFRASTRUCTURE LLC =







# ABOUT odoo



**15M+ USERS**



**17 OFFICES  
WORLDWIDE**

Odoo is a comprehensive suite of business management applications designed to streamline and automate operations across various organizational functions. Offering integrated modules such as CRM, ERP, e-commerce, accounting, inventory, and HR management, Odoo provides scalable solutions adaptable to businesses of all sizes.





# INDUSTRY WISE SOLUTIONS IN odoo



Hospitality



Construction



Services



Supply Chain



Retail



Health &  
Fitness



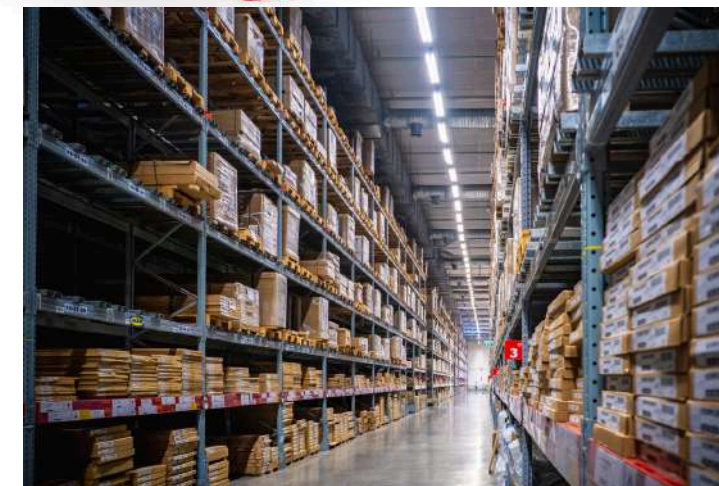
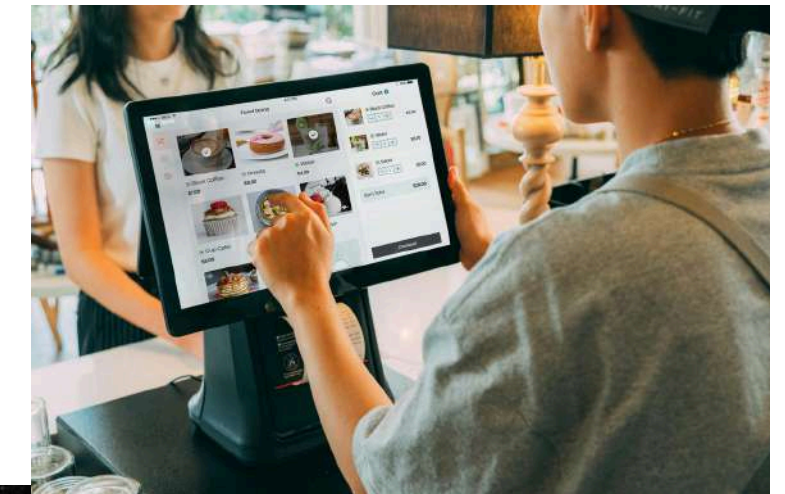
# OVERVIEW

## Why Kitchenware Retailers in Sharjah Need Odoo ERP

- Growing demand from homes, hotels, and restaurants in Sharjah
- Need for organized handling of bulk SKUs, returns, and seasonal products
- Odoo ERP simplifies inventory, supplier coordination, and customer orders

### Key Features

- SEDD license for kitchenware/general trading
- Reliable vendor partnerships
- SKU-rich inventory with variation management
- Sales team or system for billing, procurement, and customer service
- Retail/warehouse space in Al Wahda, Rolla, or Industrial Areas



**AND MUCH MORE**



# ODOO ERP FEATURES FOR KITCHENWARE RETAIL



- **Real-Time Inventory Tracking**

Sort by brand, size, material, and category

- **Supplier Management**

RFQs, price lists, and stock level alerts

- **Sales & Returns Handling**

Invoice generation, order updates, and exchanges

- **POS System**

Barcode-enabled checkout with loyalty & promotions

- **Forecasting & Sales Trends**

Analyze seasonal shifts and reorder patterns

- **Multi-Unit & Variants Support**

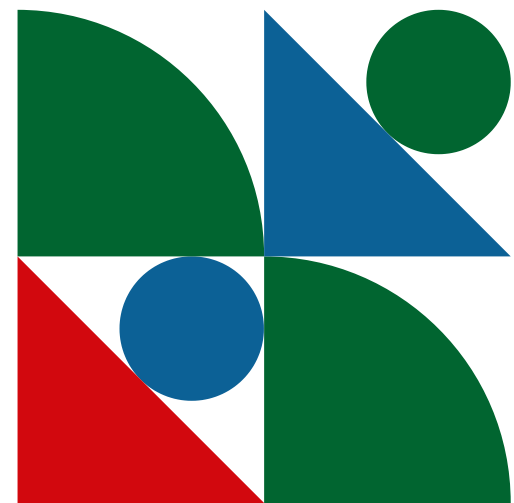
Sell by set, piece, or combo with options

- **eCommerce Integration (Optional)**

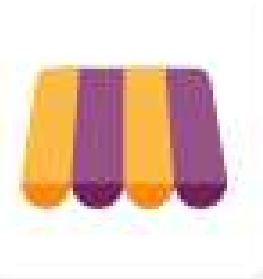
Unified stock with your online store



**AND MUCH MORE**



# ODOO ERP EVERYTHING YOU NEED IN ONE SYSTEM



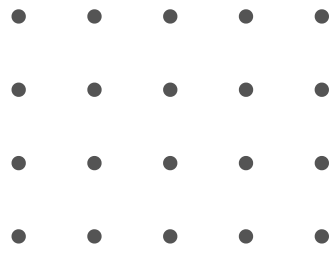
Point of Sale



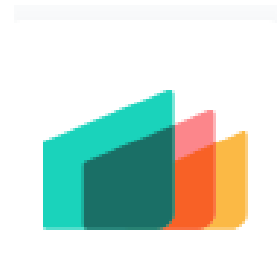
Inventory



Purchase



Accounting

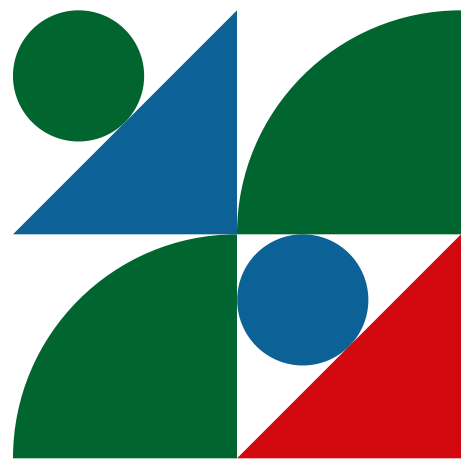


Manufacturing



Quality

AND MUCH MORE





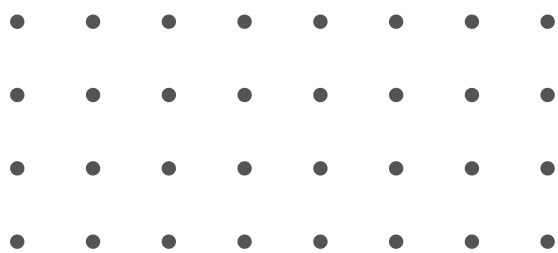
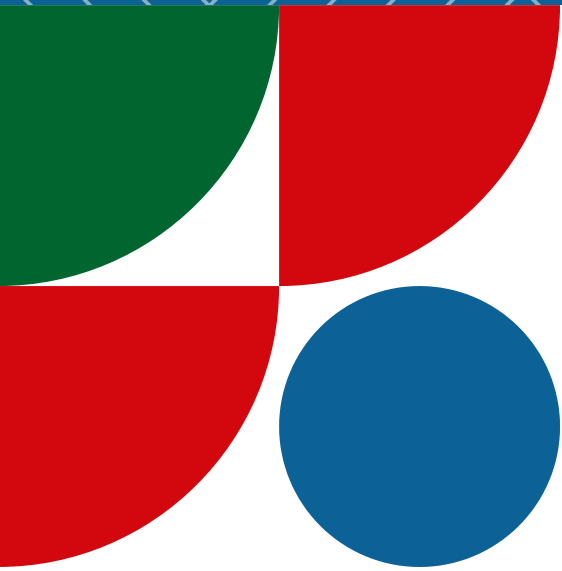
# HOW ZOLUTE HELPS KITCHENWARE RETAILERS IN SHARJAH

- **UAE-Compliant Billing**  
Setup aligned with VAT and SEDD regulations
- **Retail-Specific Workflows**  
Customized for B2C, wholesale, and hybrid models
- **Centralized Warehouse Control**  
Unified view across front store and backstock
- **Multi-Outlet Management**  
Central control for multiple shops
- **End-to-End Training & Support**  
Onboarding and real-time assistance

**AND MUCH MORE**







THANK YOU



WWW.ZOLUTE.AE | CONNECT@ZOLUTE.AE | +971 54 496 1587

